



## BASIN TAP ASSEMBLY GUIDE

---

Please read these instructions and maintenance guide thoroughly before installing your tap.

We recommend using a certified plumber to install this basin tap.

---

### **Important information**

Operating conditions: the recommended operating pressure is 1-6 bar with hot water temperature 40-90C

### **Prior to assembly**

1. Check you have all the parts listed on the following page BEFORE beginning assembly
2. Make sure that the tap is suitable for purpose and that it's compatible with your water system
3. Do not disassemble the main tap body as it has been installed, commissioned correctly and precisely before leaving the factory
4. Ensure there's a 35mm dia hole in the surface where the tap will be mounted
5. Note the hot water connector is on the left and the cold on the right
6. To prevent the tap from jamming, flush the water pipe before installation

Existing equipment:

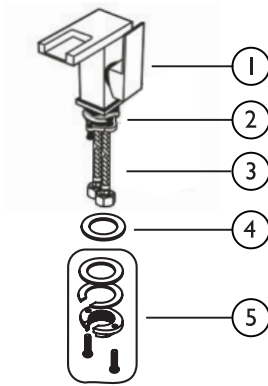
1. Inspect the supply tubing for damage and clean or replace as necessary
2. Check that the water inlet pipeline is securely connected to the valve
3. Flush the water inlet pipeline to ensure there is no debris in there
4. Shut off the mains water supply

## Assembly

### 1-piece basin tap assembly

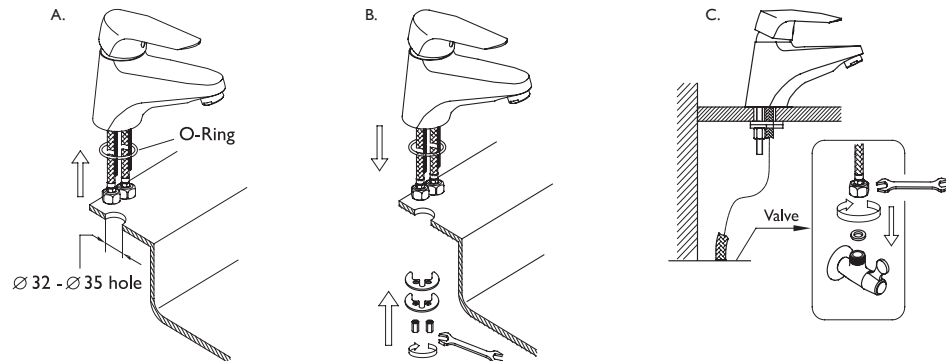
Standard fittings list:

Number	Part Name	Quantity
1	Tap Body	1
2	Gasket	1
3	Inlet Hose	2
4	Fixings: Rubber washer, metal washer, mounting nut, mounting screws	4



### Assembly steps:

1. Ensure there's a 32-35mm dia hole in the surface where the tap will be mounted.
2. Remove mounting hardware from the shank. The gasket should remain on the tap body. See Fig. A.
3. Put the tap's body with flexible hoses onto the sink and through the hole, assemble the mounting hardware in order at the bottom of the tap. See Fig. B.
4. Separately connect the two flexible hoses to the valves, left to connect the hot water and right to connect the cold water. See Fig C.



## Maintenance

- Clean the tap as and when required – regular cleaning prevents calcification
- Never use cleaning materials containing hydrochloric, formic, phosphoric or acetic acid, all of which can cause considerable damage
- Never use abrasive cleaning materials, sponge pads or micro-fibre cloths
- After cleaning, rinse the tap thoroughly with clean water to remove any cleaner residue
- Unscrew and clean the aerator regularly