

## Maintenance

- Clean the shower as and when required – regular cleaning prevents calcification
- Never use cleaning materials containing hydrochloric, formic, phosphoric or acetic acid, all of which can cause considerable damage
- Never use abrasive cleaning materials, sponge pads or micro-fibre cloths
- After cleaning, rinse the shower thoroughly with clean water to remove any cleaner residue
- Unscrew and clean the aerator regularly



## SHOWERS ASSEMBLY GUIDE

---

Please read these instructions and maintenance guide thoroughly before assembling your shower.

We recommend using a certified plumber to install this shower.

---

### Important information

Operating conditions: the recommended operating pressure is 1-6 bar with hot water temperature 40-90C

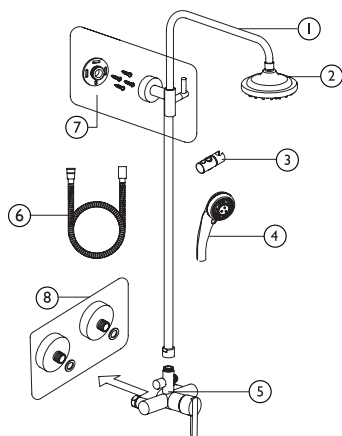
### Prior to assembly

1. Check you have all the parts listed on the following page BEFORE beginning installation
2. Make sure that the shower is suitable for purpose and that it's compatible with your water system
3. Some showers require a stud or cavity wall - check with a certified plumber before any work is carried out
4. Do not disassemble the main mixer body as it has been installed, commissioned correctly and precisely before leaving the factory
5. Note the hot water connector is on the left and the cold on the right
6. To prevent the mixer body from jamming, flush the water pipe before installation
7. Flush the water inlet pipeline to ensure there is no debris in there
8. When any works are being carried out ensure the mains water supply has been shut off
9. A supply of PTFE tape will be required to assemble the shower

## Wall mounted shower assembly

Standard fittings list:

Number	Part Name	Quantity
1	Spout	1
2	Drencher head	1
3	Hand shower cradle	1
4	Hand shower	1
5	Mixer body	1
6	Shower hose	1
7	Fixing holder	1 set
8	S-union	1 set



Assembly steps (after the valve body and relevant pipework has been installed):

1. Hold the valves to the s-unions and mark off the upper anchor point on the wall
2. Drill and rawl plug the hole for the upper anchor point
3. Place the cover caps over the hot and cold water unions
4. Place the rubber washers on the inside of the valve nuts and tighten until you feel a bite
5. Fix the upper anchor point and tighten
6. Screw the hose onto the bottom of the valve and screw the hand shower onto the other end.
7. Sit the shower head in the cradle

Usage instructions:

1. The water valve is open when the handle is turned upwards. Open the valve and check for any leaks.
2. Turning the handle to the left and right controls the water temperature – left for hot and right for cold.
3. Water will exit the spout by default. To switch it to the hand shower, pull the switch valve. The switch will reset automatically when the tap is closed.

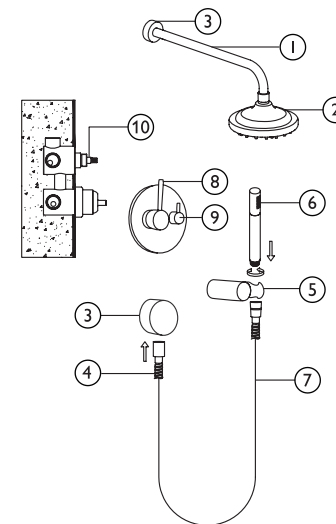
## Concealed shower assembly

Important Notes:

1. This shower requires a cavity or stud wall and the valve must be set a maximum of 75mm into the finished wall
2. Make sure the shower is fully tested before any tiling and finishing

Standard fittings list:

Number	Part Name	Quantity
1	Spout	1
2	Drencher head	1
3	Decorative cover plates	2
4	Mixer body	1
5	Hand shower cradle	1
6	Hand shower	1
7	Shower hose	1
8	Mixer handle	1
9	Diverter handle	1
10	Hose connector	1



Assembly steps (after the valve body and relevant pipework has been installed):

1. Fit the valve cover plate
2. Fit the diverter handle
3. Fit the control handle using the grub and allen key
4. Attach the hand shower head to the cone end of the shower hose with the rubber washers included
5. Screw the nut end of the hose into its wall fixing
6. Fit the hand shower cradle to the wall using the screws and rawl plugs included
7. Fit the drencher arm cover plate and screw into the union using PTFE tape
8. Attach drencher head